



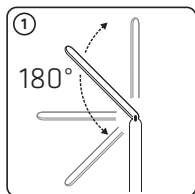
# MediaRange

COMPACT LED DESK LAMP  
WITH LCD DISPLAY

**GB** User manual, Operating- and safety instructions, Warranty conditions



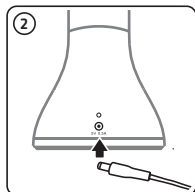
Item no.: MROS501



## 1. Setting up

Place the LED desk lamp on a horizontal and stable surface. The desk lamp comes with a joint for aligning the lamp at an optimal position and perfect illumination of your workplace.

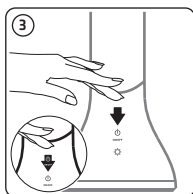
**Note:** To avoid any damages or tipping over during aligning, please hold the base of the desk lamp until you have adjusted the lamp.




## 2. Connecting and charging

Connect the desk lamp by using the included connecting cable to USB port of your computer or to an outlet by using a power supply unit (Please make sure that the socket is always easily accessible).

The built-in battery will be charged automatically when the lamp is connected. The LED is red when the battery is charging. The LED is also red when the lamp is connected and in use. The LED will turn off as soon as the battery is charged.

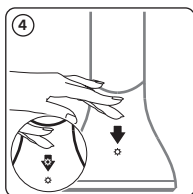


## 3. Turn the LED desk lamp on and off Brightness levels | Dimmer function


Touch the “”-button to turn on the LED desk lamp. The lamp starts at the brightest level.

The LED desk lamp has a dimmer function with three brightness levels: You can decrease the brightness by touching the button until it turns off again.

**Note:** Never look directly into the light and do not aim it directly into the eyes of other people or animals! This could lead to serious eye damage!

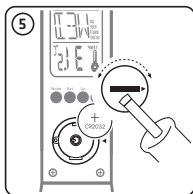


## 4. RGB Mood light

Touch the “”-button to turn on the RGB mood light. The color changes automatically from red to green and blue.

Touch the button again to turn off the mood light.

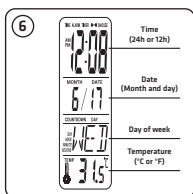
**Note:** The mood light is only a restrained background lightning. You can use both functions independently.



### 5. Insert or replace the button cell battery

Open the battery compartment with a screwdriver, insert a CR2032 button cell battery and close the battery compartment again.

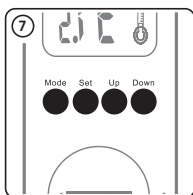
**Note:** The LCD display can only be operated when a button cell battery is inserted. All settings will reset when you remove or replace the battery.



### 6. LCD display

The LED desk lamp has a LCD display which shows the time, date/day of week and temperature and comes with an additional alarm, reminder and timer function:

- Time: Hour(s)/Minute(s)
- 12h or 24h mode
- Calendar: Month and day; day of week
- Temperature indicator; degrees in Celsius or Fahrenheit



### 7.7. Date, time and alarm settings

- Push the "Mode"-button to get into the settings menu.
- Settings can be set by using the buttons "Up" and "Down".
- Save your settings by pushing the "Set"-button.

#### 7.1. Date and time settings

Push the "Mode"-button, select the time mode (12h or 24h) and set the time and date. The day of week will set automatically: Mon/Tue/Wed/Thu/Fri/Sat/Sun.

#### 7.2. Alarm function

Push the "Mode" button two times and then the "Set"-button to set a daily alarm. You can select several melodies (1 - 9). If the alarm function is activated, "ALARM" will appear on the LCD display. To deactivate the alarm function, open the alarm menu and push the "Set"-button five times: The alarm will be reset and deactivated.

When the alarm rings, you can turn it off by pushing any button.

**7.3. Reminder function I Singular alarm**

Push the “Mode” button three times and then the “Set”-button to set a singular alarm for a specific date.

When the alarm rings, you can turn it off by pushing any button.

**7.4. Timer**

Push the “Mode”-button four times and then the “Set”-button to set the timer (Hour/Minutes). The timer starts after your settings have been approved.

When the alarm rings, you can turn it off by pushing any button.

**GB** Care and cleaning

- Turn off and disconnect the LED desk lamp before cleaning.
- Please clean the LED desk lamp only with a slightly damp and lint-free cloth.
- Do not use any aggressive cleaning agents.
- Please make sure that no water or any other liquid gets into the lamp.

**GB** Technical data

Input power	DC 5V; 0.5A
Power consumption	3.6W (18x LEDs; each 0.2W)
Battery capacity	1.200mAh
Lamps	Built-in LEDs (not replaceable)
Operating temperature	-10°C to 40°C
Light color	neutral white 4.000K ± 400K
LED life time	30.000h
Luminous flux	> 250lm
Dimensions (closed); Weight	Ø 87mm, Height: 263mm; ± 345g
Total length swinging arm	190mm



To improve products performance, the content of this user manual may be revised without prior notice. All brands and product names referenced in this user manual are property of their respective owners and referred to for descriptive purposes only.

## **GB** Warranty

MediaRange GmbH assumes no liability and provides no warranty for damage resulting from improper installation/mounting, improper use of the product or from failure to observe the operating and/or safety instructions.

## **GB** Support service

If you have any questions about our products, please contact the MediaRange support service: Tel.: +49 (0) 6196 523 81 80 or by E-Mail [info@mediarange.de](mailto:info@mediarange.de)

## **GB** Package contents

MediaRange LED desk lamp, DC 5V to USB plug connection cable, 1x CR2032 button cell battery, User manual and warranty

## **GB** Operation- and safety instructions

- The LED desk lamp may only be operated with the supplied DC 5V to USB connection cable.
- Please make sure that the socket is always easily accessible when the lamp is operated by an external power supply unit.
- The lamp can be operated by using the USB port of your computer or laptop.
- If you do not use the lamp for long periods of time, please disconnect it from the outlet.
- Operate this product only in a dry environment at -10 to 40 degrees Celsius.
- Do not insert any objects into the charging port which are not designed for its use.
- Avoid direct sunlight and do not operate the lamp in the immediate vicinity of heaters or other heat sources.
- Do not use this product in damp environments and do not expose the product or any of its supplied parts to water or other liquids.
- Do not use the product in extremely cold, hot, humid or dusty areas.
- Avoid contact with open flame: Risk of explosion!
- Do not drop this product or handle roughly and protect it against shock and drops in all operating modes.
- Do not open the lamp and do not operate the desk lamp or any of its supplied parts if there is visible damage when wet.
- Do not try to repair the product on your own.
- Never look directly into the lamp and do not aim its light directly into the eyes of other people or animals! This could lead to serious eye damage!
- The lamp may get hot while in use.
- Please be aware that even LED lights may generate heat and get hot: Please let the desk lamp cool off for a couple of minutes before you touch it.
- (...)

## **GB** Operation- and safety instructions

- (...)
- Please keep the area around the desk lamp free of objects and do not hang anything on it. Doing so could create a fire hazard!
- To avoid any damages or tipping over during aligning, please hold the base of the desk lamp until you have adjusted the lamp and make sure that no electrical cables are damaged or crushed during adjusting.
- If you do not use the desk lamp for long periods of time, turn it off and store it at a temperature range of -10 to 45 degree Celsius and charge the battery every three month to protect the performance of the battery.

## **GB** Disposal of used electronic equipment

This device is subject to the European Directive 2012/19/EG. All electrical devices and used electrical equipment must be disposed of separately from household waste over the appropriate government agencies. Proper disposal of old electronic equipment helps avoid environmental damage.

## **GB** Disposal of old batteries

This device is subject to the European Directive 2006/66/EG. All old batteries must be disposed separately from household garbage through the government agencies designated for that purpose. By disposing the batteries in this prescribed manner, you can avoid environmental damages.

## **GB** Warranty conditions

The warranty only covers material and production defects. The free warranty service covers the repair or replacement of defective parts.

All MediaRange products are subject to constant quality inspections and the legal warranty period applies, of course, from the date of purchase. Please be sure to save the sales receipt as proof of purchase.

Please understand that we cannot render any warranty services in case of:

- Misuse or improper handling, installation or use
- Disregard for the operating and safety instructions
- Damages, scratches or wear
- Modifications, manipulation or repairs by third parties
- Damages by Acts of God or transport

## **GB** Warranty conditions

In case of a claim, please proceed as follows:

- Only returns accompanied with all accessories and sales receipt will be accepted.
- Contact the MediaRange Support service by e-mail or via our service hotline.
- Please make sure that the package is packed safe for transport.
- Please supply sufficient postage and send it to:  
MediaRange GmbH, Zum Quellenpark 29, 65812 Bad Soden a.Ts., Germany

## **GB** Important notes

**Please note that any warranty claim shall expire if the housing of the product has been opened. This product is not meant for a commercial use or for medical and special applications, where the failure of the product may cause injuries, death or significant material damages. The warranty only covers the replacement of this MediaRange product. The warranty is not applicable for normal wear & tear resulting from erroneous, improper use of the device, negligence, accident or incompatibility. There are no warranty claims if the user manual is not followed and if the device is damaged through improper use or defects caused by other devices. There are no warranty claims if the product is exposed to shocks, electrostatic discharges, heat or humidity effects beyond the product specifications. MediaRange is not liable for any collateral damages or consequential losses, for violation of warranty conditions or any other losses irrespective of the cause. MediaRange GmbH is not liable for the loss of data in units sent to us.**

**Item No.:  
MROS502**

**MADE IN CHINA**



**MediaRange GmbH**  
D-65182 Bad Soden a.Ts.  
[www.mediarange.de](http://www.mediarange.de)